



A TELLIGEN SUCCESS STORY:

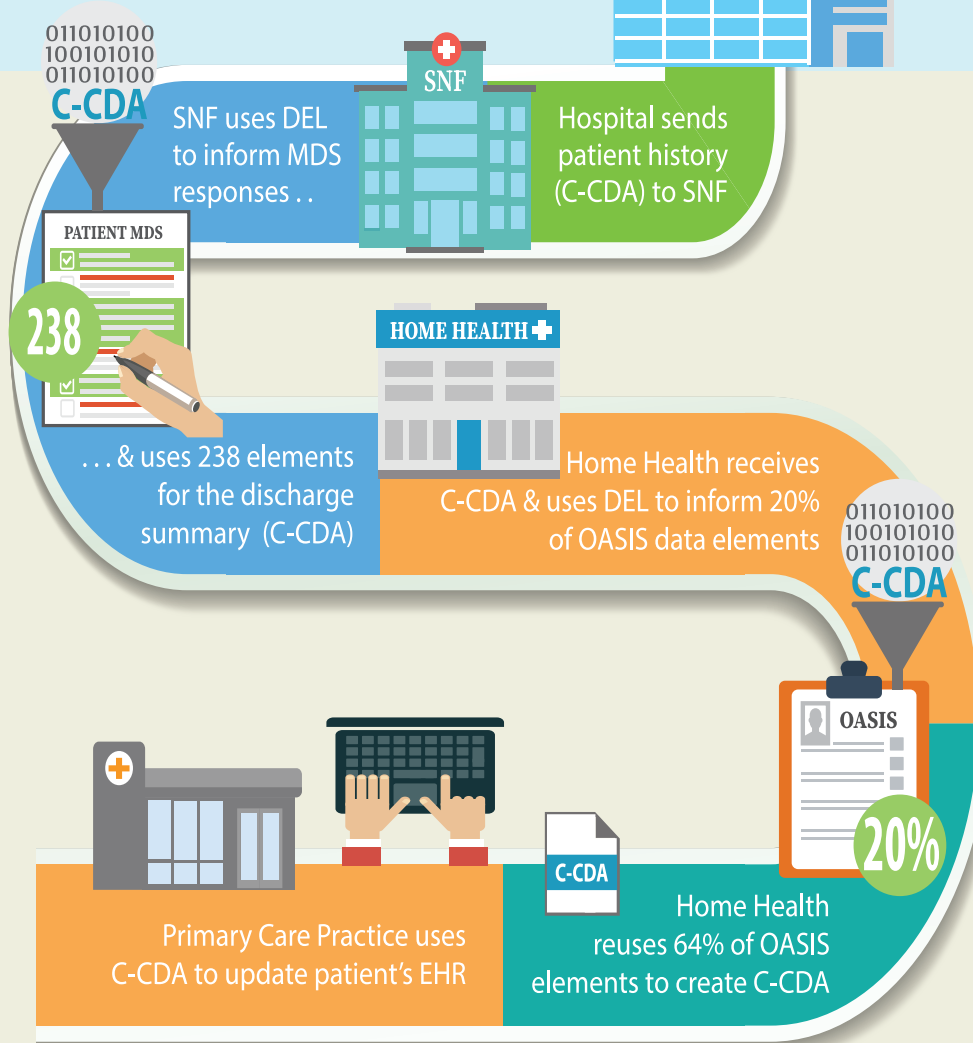
The Data Element Library (DEL)

Helping CMS Promote Interoperability in Post-Acute Care Settings



How Does The DEL Work?

From Hospital Admission to Post-Acute Care to Primary Care Practice



The DEL By

5

Types of Post-Acute Care Assessments

15

Months for Telligen to Complete the Project

1,400

Standardized Data Elements



The Numbers

1/5

Medicare Patients Readmitted in <1 month

3M

Monthly Medicare Patients Moving to a PAC Facility

17B

Annual Cost to Medicare in Avoidable Readmissions

Delivering Value To...

CMS
Reaching goals related to interoperability & information exchange.



Healthcare Companies
Can easily integrate elements into systems for reporting quality.



PAC Providers
Can expect better care coordination & less work burdens.



EHR Vendors
One-stop shop for integrating standards & elements into EHRs.



The Public:
One location for obtaining CMS' PAC assessment content.

