

SPECTRUM OF HEALTH™

© 2019, Telligen, Inc.

Predictive Analytics Tool for Measuring Population Health

GAIN BIG PICTURE INSIGHT INTO YOUR POPULATION



IDENTIFY HIGH-RISK MEMBERS BEFORE CARE BECOMES COSTLY



UTILIZE DATA IN MEANINGFUL WAYS

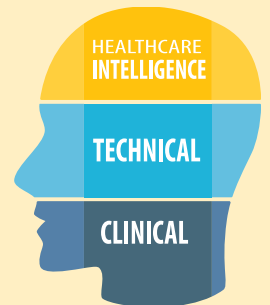


DELIVER SOLUTIONS ACROSS THE SPECTRUM OF HEALTH



ACHIEVE HEALTHCARE INTELLIGENCE

Meet goals with Telligen's clinical & technical expertise:



CLINICAL = 350+ nurses, physicians, pharmacists, social workers, case managers, & health coaches

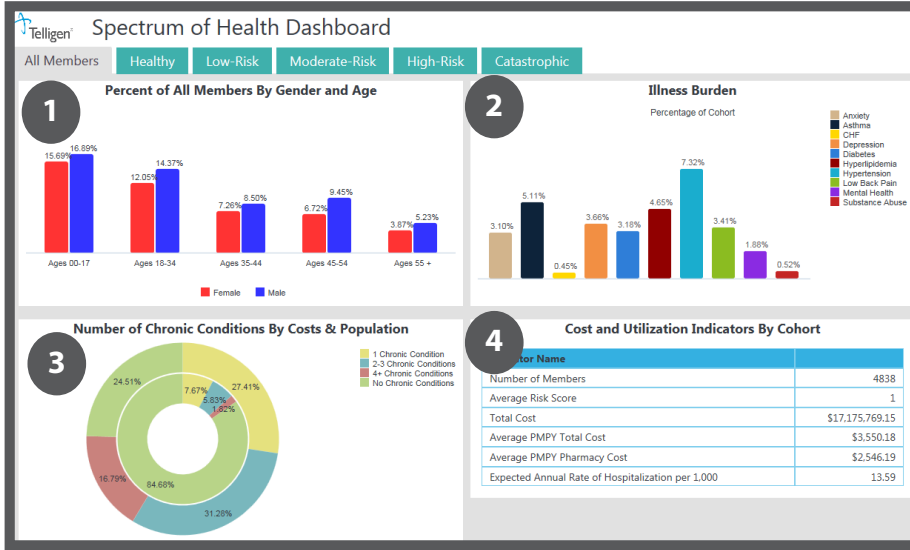
TECHNICAL = 250+ developers, architects, statisticians, analysts, biostatistics, epidemiologists, & specialized researchers

ADVANCE POPULATION HEALTH



Get Big Picture Insight Into Your Population . . .

* Images display sample data from the 'All Members' Spectrum of Health category



Telligen Contact:

Brian Barry
 Vice President,
 Information Management Solutions
 (P) 515.362.8398
 (E) bbarry@telligen.com

And Drill Down to Individual Spectrum Categories

* Images display sample data from the 'Moderate Risk' Spectrum of Health category

